

**SWEETIE PLUS IATOLAS BOLD**

Sire: SC GOLD DUST PARAMOUNT IATOLA-ET  
 Dam: SWEETIE PLUS FG ARTIST BOLD  
 MGS: ISDK JAS ARTIST

1JE711

PLUS

JEUSA000067129272 \*

DOB: 6/19/2007

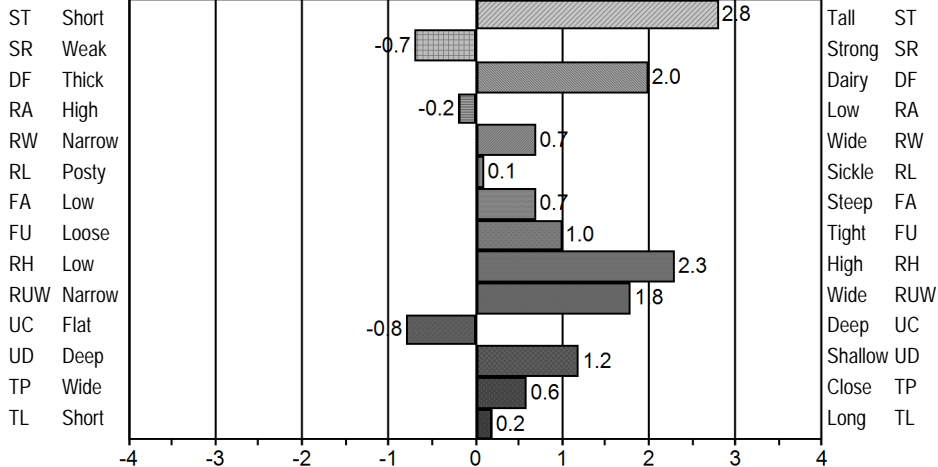
**JPI 222**

Marketing Organization: GENEX / CRI

AJCA/USDA: 12/1/2013

PTA Milk	1719
PTA % Fat	-0.04
PTA Fat	70
PTA % Protein	-0.02
PTA Protein	58
Percentile NM\$	95
Cheese Merit	536
Net Merit \$	504
Fluid Merit \$	487
Productive Life	1.9
Somatic Cell Score	2.96
Daughter Pregnancy Rate	-0.1
Expected Future Inbreeding	7.8

Breeder: SWEETIE PLUS % DAN BANSEN  
 Owner: GENEX COOPERATIVE INC



665 Appraised Daughters in 111 Herds

**SUNRISE/HACKLINE BUNGY ZIPPER**

Sire: ISDK JAS BUNGY  
 Dam: IMPULS ZIPPER 504  
 MGS: ISDK Q IMPULS

7JE1046

ZIPPER

JEUSA000067039609 \*

DOB: 11/14/2006

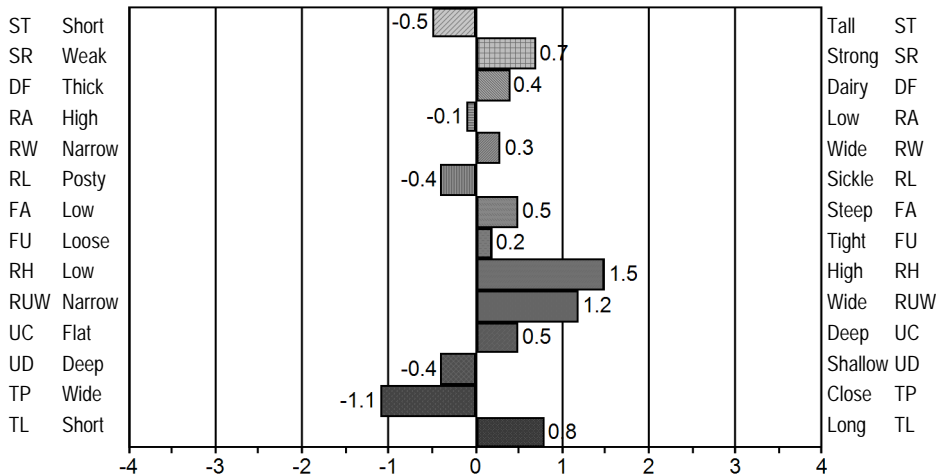
**JPI 221**

Marketing Organization: SELECT SIRES

AJCA/USDA: 12/1/2013

PTA Milk	1400
PTA % Fat	0.02
PTA Fat	68
PTA % Protein	0.05
PTA Protein	58
Percentile NM\$	95
Cheese Merit	587
Net Merit \$	520
Fluid Merit \$	476
Productive Life	2.6
Somatic Cell Score	3.06
Daughter Pregnancy Rate	0.9
Expected Future Inbreeding	3.6

Breeder: RICHAEAL BRYAN & HACKLINE JERSEYS  
 Owner: SELECT SIRES INC - SIRE DEPT



40 Appraised Daughters in 28 Herds

**WILSONVIEW JEVON MAGNUM-ET**

Sire: FOREST GLEN MECCAS JEVON-ET  
 Dam: IMPULSIVE MONET OF WILSONVIEW-ET  
 MGS: ISDK Q IMPULS

523JE927

MAGNUM

JEUSA000067010044 \*

DOB: 6/30/2008

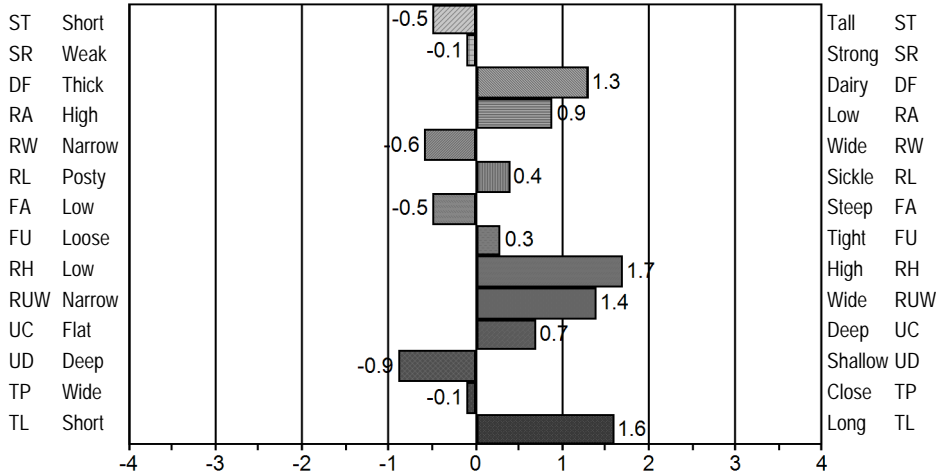
**JPI 221**

Marketing Organization: SELECT SIRES

AJCA/USDA: 12/1/2013

PTA Milk	1204
PTA % Fat	0.17
PTA Fat	87
PTA % Protein	0.01
PTA Protein	46
Percentile NM\$	99
Cheese Merit	680
Net Merit \$	637
Fluid Merit \$	608
Productive Life	5.5
Somatic Cell Score	3.00
Daughter Pregnancy Rate	0.6
Expected Future Inbreeding	6.7

Breeder: JOSI D&L  
 Owner: JOSI D&L



161 Appraised Daughters in 16 Herds

**ALL LYNNS LOUIE VALENTINO-ET**

Sire: BHF-SSF PARADE LOUIE-ET  
 Dam: D&E PARAMOUNT VIOLET  
 MGS: ROCK ELLA PARAMOUNT-ET

PTA Milk	1716
PTA % Fat	-0.13
PTA Fat	54
PTA % Protein	-0.04
PTA Protein	54
Percentile NM\$	89
Cheese Merit	484
Net Merit \$	461
Fluid Merit \$	445
Productive Life	2.5
Somatic Cell Score	2.83
Daughter Pregnancy Rate	-0.9
Expected Future Inbreeding	9.1

Breeder: ALLEN, DAVID  
 Owner: SELECT SIRE INC - SIRE DEPT

7JE1038

VALENTINO

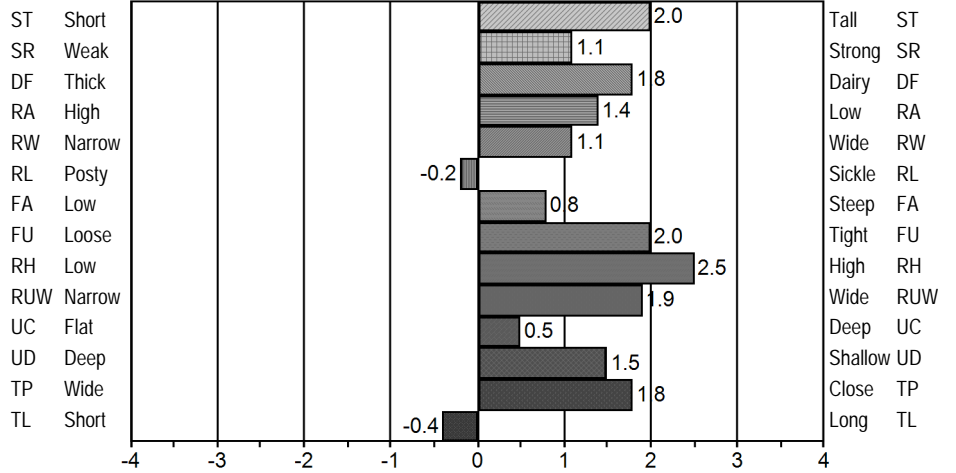
JEUSA000116279413 \*

DOB: 9/22/2008

**JPI 215**

Marketing Organization: SELECT SIRE INC

YSP AJCA/USDA: 12/1/2013



430 Appraised Daughters in 155 Herds

**GR OOMSDALE TBONE GOLDA-ET**

Sire: RICHIES JACE TBONE A364  
 Dam: PR OOMSDALE BRAZO GRATITUDE GRACE-ET  
 MGS: SIL-MIST RMBM BUTTONS BRAZO-ET

PTA Milk	1882
PTA % Fat	-0.08
PTA Fat	70
PTA % Protein	-0.03
PTA Protein	60
Percentile NM\$	82
Cheese Merit	435
Net Merit \$	416
Fluid Merit \$	415
Productive Life	1.1
Somatic Cell Score	3.06
Daughter Pregnancy Rate	-0.8
Expected Future Inbreeding	5.5

Breeder: OOMS, MICHAEL AREND  
 Owner: SELECT SIRE INC - SIRE DEPT

7JE1067

GR-GOLDA

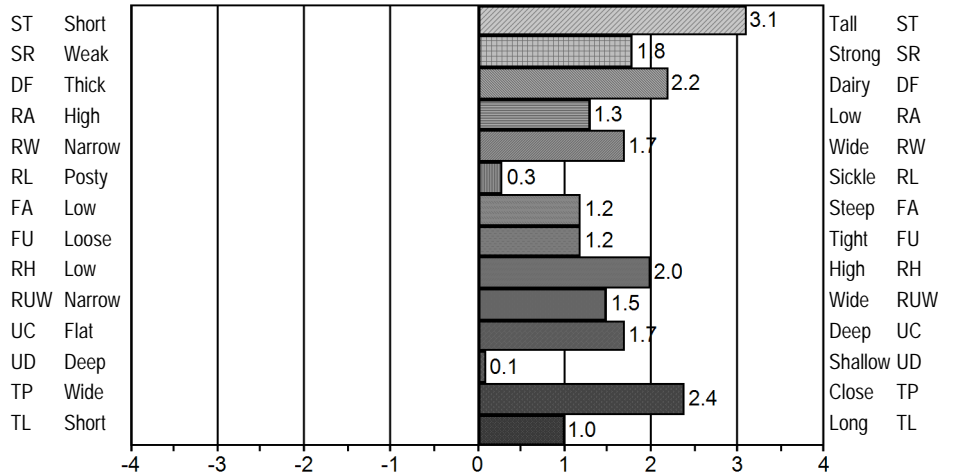
JEUSA000067080468 \*

DOB: 3/24/2009

**JPI 211**

Marketing Organization: SELECT SIRE INC

GDP AJCA/USDA: 12/1/2013



17 Appraised Daughters in 8 Herds

**ALL LYNNS MAXIMUM VERNON-ET**

Sire: SUNSET CANYON MAXIMUM-ET  
 Dam: D&E PARAMOUNT VIOLET  
 MGS: ROCK ELLA PARAMOUNT-ET

PTA Milk	1605
PTA % Fat	0.06
PTA Fat	85
PTA % Protein	0.00
PTA Protein	57
Percentile NM\$	93
Cheese Merit	534
Net Merit \$	500
Fluid Merit \$	491
Productive Life	2.6
Somatic Cell Score	3.18
Daughter Pregnancy Rate	-0.9
Expected Future Inbreeding	6.6

Breeder: ALLEN, DAVID  
 Owner: ABS GLOBAL INC

29JE3624

VERNON

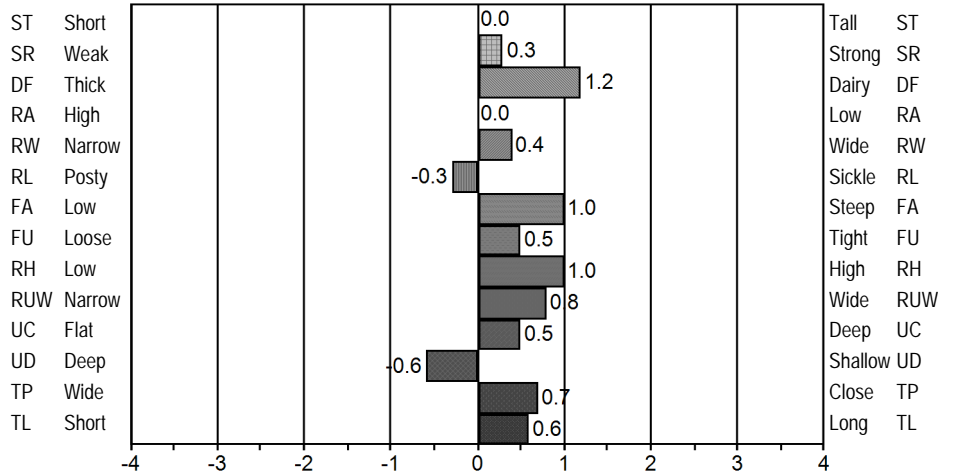
JEUSA000115863998 \*

DOB: 10/30/2007

**JPI 206**

Marketing Organization: ABS GLOBAL

AJCA/USDA: 12/1/2013



34 Appraised Daughters in 22 Herds

**ISDK VJ LURE**

Sire: ISDK DJ LIRSK  
 Dam: DNK DAM OF VJ LURE  
 MGS: ISDK Q IMPULS

**236JE153****LURE**

JEDNK00000303259

DOB: 12/6/2007

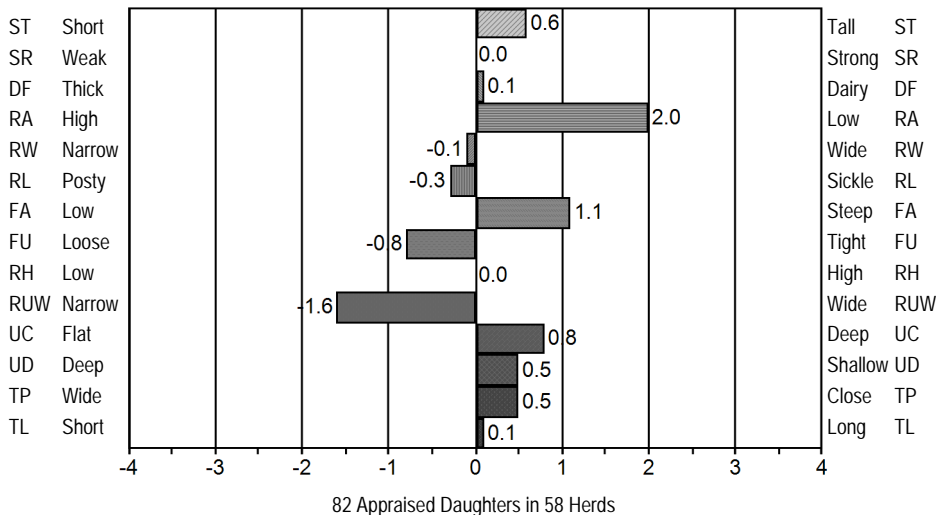
**JPI 201**

Marketing Organization: CREATIVE GENETICS

AJCA/USDA: 12/1/2013

PTA Milk	-5
PTA % Fat	0.48
PTA Fat	89
PTA % Protein	0.20
PTA Protein	37
Percentile NM\$	99
Cheese Merit	770
Net Merit \$	616
Fluid Merit \$	489
Productive Life	4.7
Somatic Cell Score	2.82
Daughter Pregnancy Rate	1.0
Expected Future Inbreeding	4.6

Breeder: UNKNOWN  
 Owner: UNKNOWN

**GR ALL LYNNS DALE VACATION-ET**

Sire: PR OOMSDALE JACE GRATIT GARDEN-ET  
 Dam: D&E PARAMOUNT VIOLET  
 MGS: ROCK ELLA PARAMOUNT-ET

**11JE1039****GR-VACATION**

JEUSA000116611642 \*

DOB: 4/4/2009

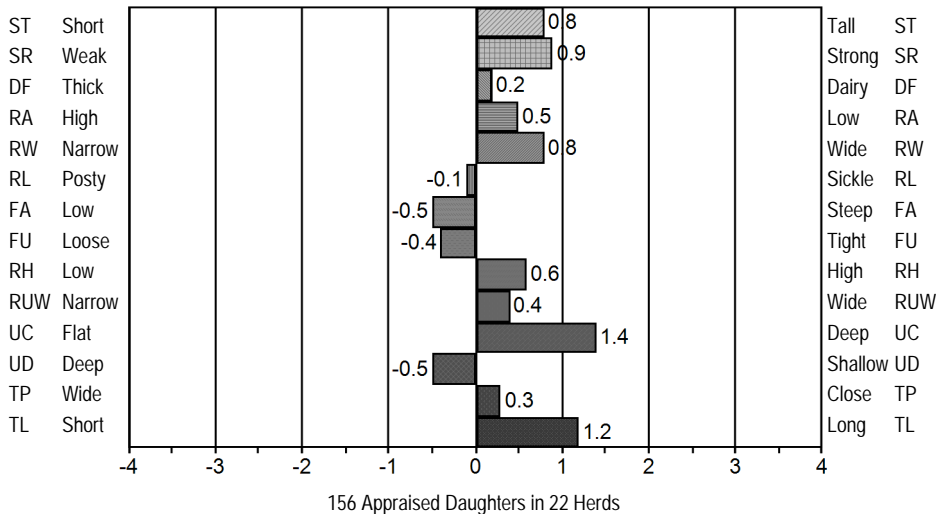
**JPI 190**

Marketing Organization: ALTA GENETICS

YSP AJCA/USDA: 12/1/2013

PTA Milk	1626
PTA % Fat	-0.02
PTA Fat	70
PTA % Protein	-0.02
PTA Protein	53
Percentile NM\$	87
Cheese Merit	473
Net Merit \$	443
Fluid Merit \$	424
Productive Life	2.6
Somatic Cell Score	2.89
Daughter Pregnancy Rate	-1.2
Expected Future Inbreeding	5.1

Breeder: ALLEN, DAVID  
 Owner: JERSEYLAND SIRES

**ALL LYNNS VAUGHN-ET**

Sire: ISDK Q IMPULS  
 Dam: D&E PARAMOUNT VIOLET  
 MGS: ROCK ELLA PARAMOUNT-ET

**200JE485****VAUGHN**

JEUSA000116160016 \*

DOB: 6/11/2008

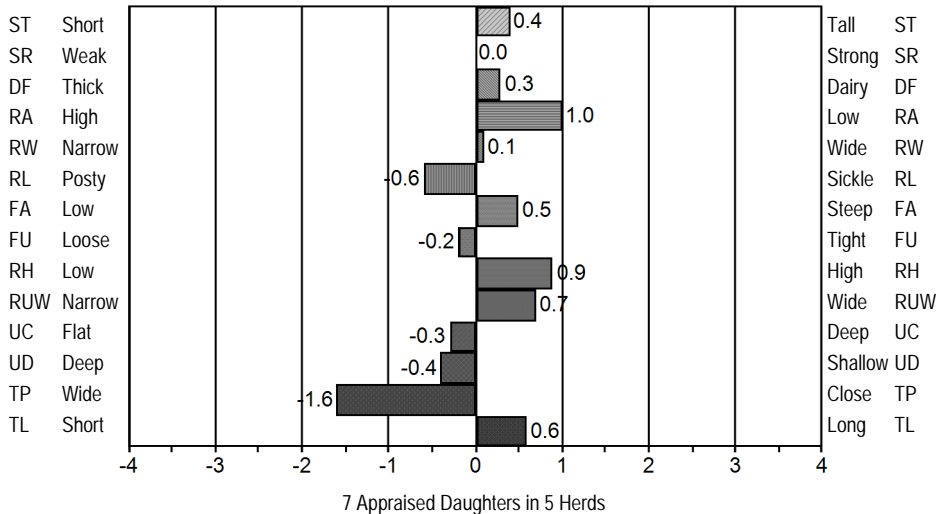
**JPI 189**

Marketing Organization: SEMEX ALLIANCE

AJCA/USDA: 12/1/2013

PTA Milk	1382
PTA % Fat	-0.01
PTA Fat	63
PTA % Protein	0.02
PTA Protein	53
Percentile NM\$	89
Cheese Merit	507
Net Merit \$	461
Fluid Merit \$	438
Productive Life	2.8
Somatic Cell Score	3.13
Daughter Pregnancy Rate	0.2
Expected Future Inbreeding	4.8

Breeder: ALLEN, DAVID  
 Owner: THE SEMEX ALLIANCE



**BW RENEGADE-ET**

Sire: SUNSET CANYON MAXIMUM-ET  
 Dam: BW CENTURION IRIS K347  
 MGS: SOONER CENTURION-ET

200JE60

RENEGADE

JEUSA000115883929 \*

DOB: 1/31/2008

**JPI 189**

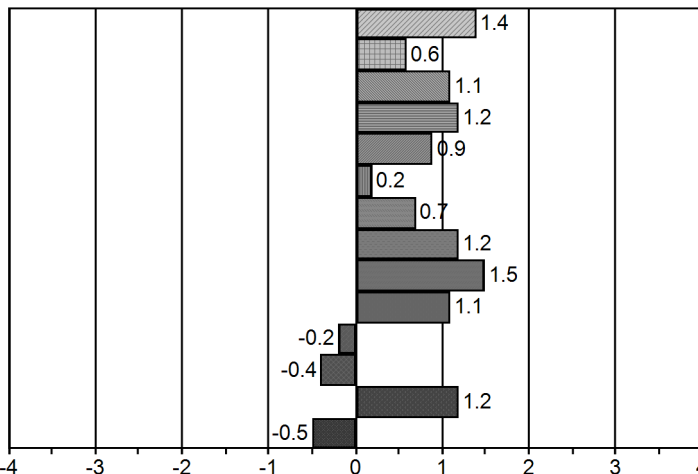
Marketing Organization: SEMEX ALLIANCE

AJCA/USDA: 12/1/2013

PTA Milk	657
PTA % Fat	0.28
PTA Fat	83
PTA % Protein	0.08
PTA Protein	38
Percentile NM\$	98
Cheese Merit	616
Net Merit \$	531
Fluid Merit \$	459
Productive Life	3.2
Somatic Cell Score	2.88
Daughter Pregnancy Rate	0.7
Expected Future Inbreeding	6.1

Breeder: BRENTWOOD FARMS  
 Owner: THE SEMEX ALLIANCE & R/P BIGNAMI CHILDRENS TRUST

ST Short  
 SR Weak  
 DF Thick  
 RA High  
 RW Narrow  
 RL Posty  
 FA Low  
 FU Loose  
 RH Low  
 RUW Narrow  
 UC Flat  
 UD Deep  
 TP Wide  
 TL Short



Tall ST  
 Strong SR  
 Dairy DF  
 Low RA  
 Wide RW  
 Sickle RL  
 Steep FA  
 Tight FU  
 High RH  
 Wide RUW  
 Deep UC  
 Shallow UD  
 Close TP  
 Long TL

735 Appraised Daughters in 130 Herds

**SUN VALLEY IMPULS JUPITER**

Sire: ISDK Q IMPULS  
 Dam: SUN VALLEY HALLMARK JERSEY  
 MGS: SCHULTZ BROOK HALLMARK

29JE3615

JUPITER

JEUSA000115870022 \*

DOB: 5/7/2007

**JPI 187**

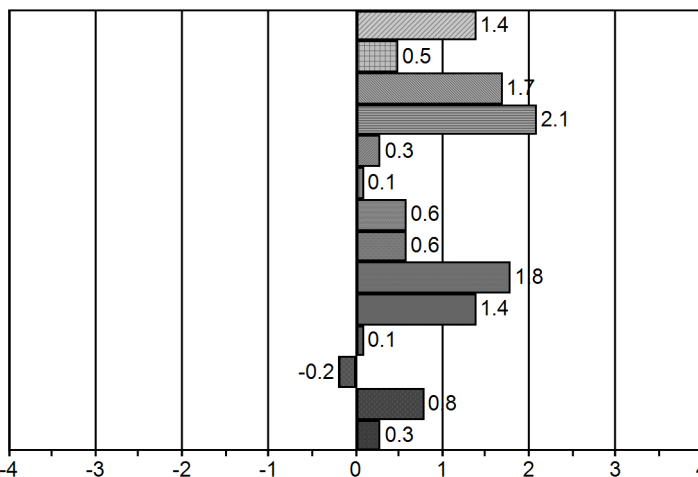
Marketing Organization: ABS GLOBAL

AJCA/USDA: 12/1/2013

PTA Milk	1296
PTA % Fat	0.06
PTA Fat	70
PTA % Protein	0.01
PTA Protein	49
Percentile NM\$	82
Cheese Merit	459
Net Merit \$	422
Fluid Merit \$	405
Productive Life	1.7
Somatic Cell Score	3.13
Daughter Pregnancy Rate	0.2
Expected Future Inbreeding	6.4

Breeder: SUN VALLEY FARM  
 Owner: ABS GLOBAL INC

ST Short  
 SR Weak  
 DF Thick  
 RA High  
 RW Narrow  
 RL Posty  
 FA Low  
 FU Loose  
 RH Low  
 RUW Narrow  
 UC Flat  
 UD Deep  
 TP Wide  
 TL Short



Tall ST  
 Strong SR  
 Dairy DF  
 Low RA  
 Wide RW  
 Sickle RL  
 Steep FA  
 Tight FU  
 High RH  
 Wide RUW  
 Deep UC  
 Shallow UD  
 Close TP  
 Long TL

67 Appraised Daughters in 31 Herds

**GR HEARTLAND GANNON SUNDANCE-ET**

Sire: PR OOMSDALE JACE GRATUDE GANNON-ET  
 Dam: HEARTLAND IMPULS SUNDANCE-ET  
 MGS: ISDK Q IMPULS

11JE1046

GR-SUNDANCE

JEUSA000067231699 \*

DOB: 6/24/2009

**JPI 184**

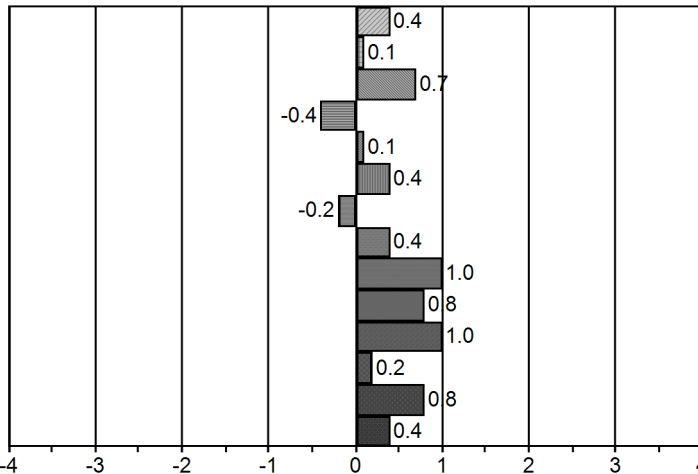
Marketing Organization: ALTA GENETICS

GDP AJCA/USDA: 12/1/2013

PTA Milk	796
PTA % Fat	0.22
PTA Fat	79
PTA % Protein	0.05
PTA Protein	38
Percentile NM\$	95
Cheese Merit	582
Net Merit \$	515
Fluid Merit \$	457
Productive Life	3.8
Somatic Cell Score	2.85
Daughter Pregnancy Rate	-0.4
Expected Future Inbreeding	5.9

Breeder: HEARTLAND JERSEYS  
 Owner: JERSEYLAND SIREs

ST Short  
 SR Weak  
 DF Thick  
 RA High  
 RW Narrow  
 RL Posty  
 FA Low  
 FU Loose  
 RH Low  
 RUW Narrow  
 UC Flat  
 UD Deep  
 TP Wide  
 TL Short



Tall ST  
 Strong SR  
 Dairy DF  
 Low RA  
 Wide RW  
 Sickle RL  
 Steep FA  
 Tight FU  
 High RH  
 Wide RUW  
 Deep UC  
 Shallow UD  
 Close TP  
 Long TL

28 Appraised Daughters in 12 Herds

### CAL-MART NAVARA BLADE

Sire: ISAU DARAWAY FLOWERPOWER NAVARA-ET  
 Dam: CAL-MART IMPULS BABITA 8435  
 MGS: ISDK Q IMPULS

29JE3678

BLADE

JEUSA000116490957 \*

DOB: 1/29/2009

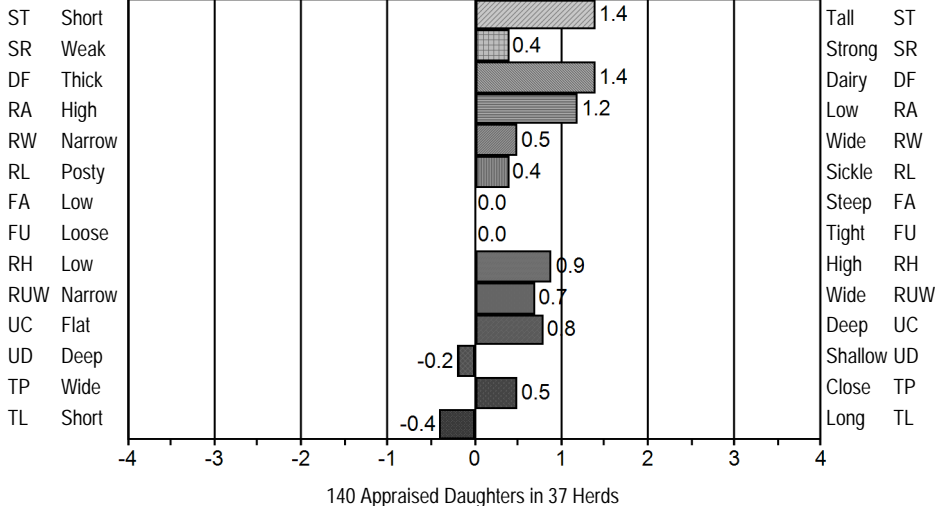
JPI 183

Marketing Organization: ABS GLOBAL

AJCA/USDA: 12/1/2013

PTA Milk	886
PTA % Fat	0.13
PTA Fat	66
PTA % Protein	0.08
PTA Protein	46
Percentile NM\$	83
Cheese Merit	521
Net Merit \$	435
Fluid Merit \$	367
Productive Life	2.5
Somatic Cell Score	2.95
Daughter Pregnancy Rate	0.1
Expected Future Inbreeding	5.2

Breeder: MARTIN DAIRY LLC  
 Owner: ABS GLOBAL INC



### PETERSON IMPULSIVE ROY

Sire: ISDK Q IMPULS  
 Dam: PETERSON JACE MYRNA  
 MGS: WINDY WILLOW MONTANA JACE

14JE555

ROY

JEUSA000117011436 \*

DOB: 11/13/2009

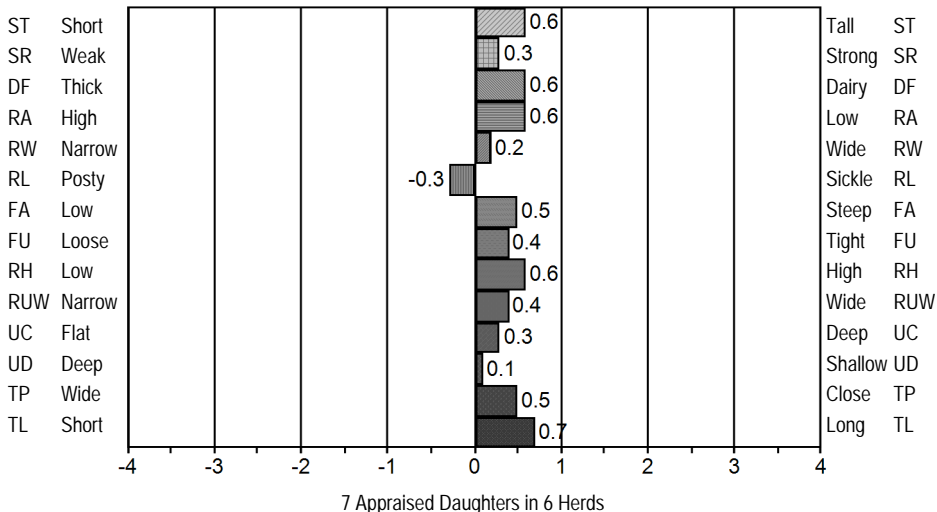
JPI 179

Marketing Organization: ACCELERATED GENETICS

GDP AJCA/USDA: 12/1/2013

PTA Milk	579
PTA % Fat	0.20
PTA Fat	64
PTA % Protein	0.10
PTA Protein	39
Percentile NM\$	92
Cheese Merit	595
Net Merit \$	497
Fluid Merit \$	413
Productive Life	3.8
Somatic Cell Score	2.86
Daughter Pregnancy Rate	0.4
Expected Future Inbreeding	6.6

Breeder: PETERSON ERIC & ROY  
 Owner: ACCELERATED GENETICS



### DUTCH HOLLOW LEXICON

Sire: WOODSTOCK LEXINGTON-ET  
 Dam: DUTCH HOLLOW REBEL DIVA  
 MGS: O.F. MANNIX REBEL-ET

1JE700

LEXICON

JEUSA000115479865 \*

DOB: 3/20/2007

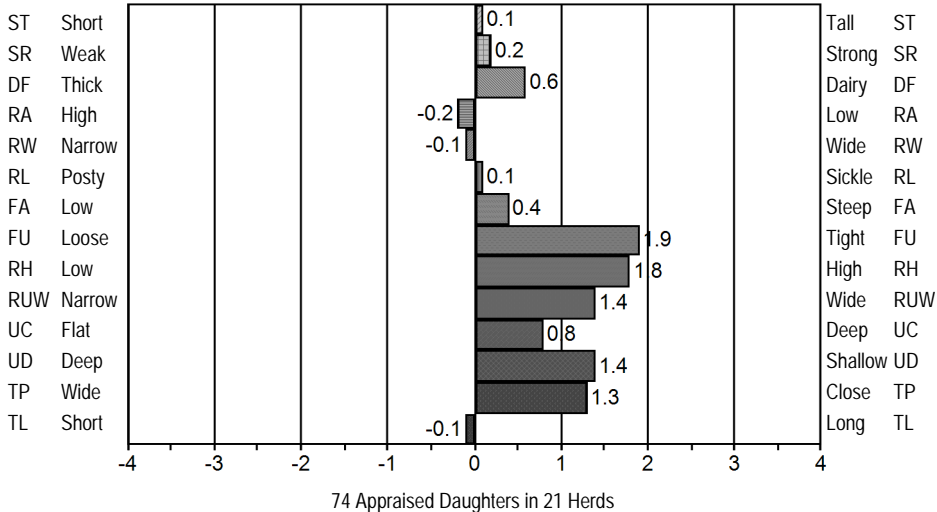
JPI 179

Marketing Organization: GENEX / CRI

AJCA/USDA: 12/1/2013

PTA Milk	720
PTA % Fat	0.11
PTA Fat	54
PTA % Protein	0.03
PTA Protein	33
Percentile NM\$	90
Cheese Merit	523
Net Merit \$	465
Fluid Merit \$	412
Productive Life	3.2
Somatic Cell Score	2.80
Daughter Pregnancy Rate	0.4
Expected Future Inbreeding	9.5

Breeder: COUCH, KARIN CHITTENDEN  
 Owner: GENEX COOPERATIVE INC.



### ALL LYNNS RESTORE VITO-ET

Sire: SCHULTZ DUDLEY RESTORE-ET  
 Dam: D&E PARAMOUNT VIOLET  
 MGS: ROCK ELLA PARAMOUNT-ET

PTA Milk	2383
PTA % Fat	-0.27
PTA Fat	55
PTA % Protein	-0.05
PTA Protein	75
Percentile NM\$	53
Cheese Merit	334
Net Merit \$	312
Fluid Merit \$	309
Productive Life	-0.3
Somatic Cell Score	2.98
Daughter Pregnancy Rate	-3.0
Expected Future Inbreeding	8.0

Breeder: ALLEN, DAVID  
 Owner: ACCELERATED GENETICS

14JE533

VITO

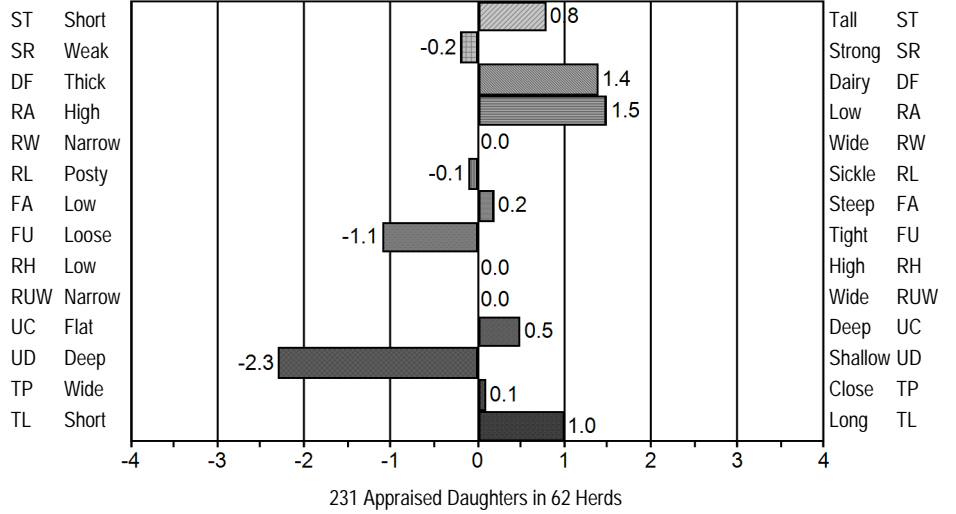
JEUSA000116076869 \*

DOB: 4/21/2008

JPI 178

Marketing Organization: ACCELERATED GENETICS

YSP AJCAUSDA: 12/1/2013



### GR CCJ GEMINIS IMPULS GATSBY

Sire: ISDK Q IMPULS  
 Dam: PR OOMSDALE BRAZO GRATITUDE GEMINI-ET  
 MGS: SIL-MIST RMBM BUTTONS BRAZO-ET

PTA Milk	874
PTA % Fat	0.12
PTA Fat	62
PTA % Protein	0.09
PTA Protein	50
Percentile NM\$	86
Cheese Merit	534
Net Merit \$	440
Fluid Merit \$	373
Productive Life	3.6
Somatic Cell Score	3.13
Daughter Pregnancy Rate	-0.2
Expected Future Inbreeding	3.1

Breeder: ARLEN, CHARLES  
 Owner: ABS GLOBAL INC

29JE3642

GR-GATSBY

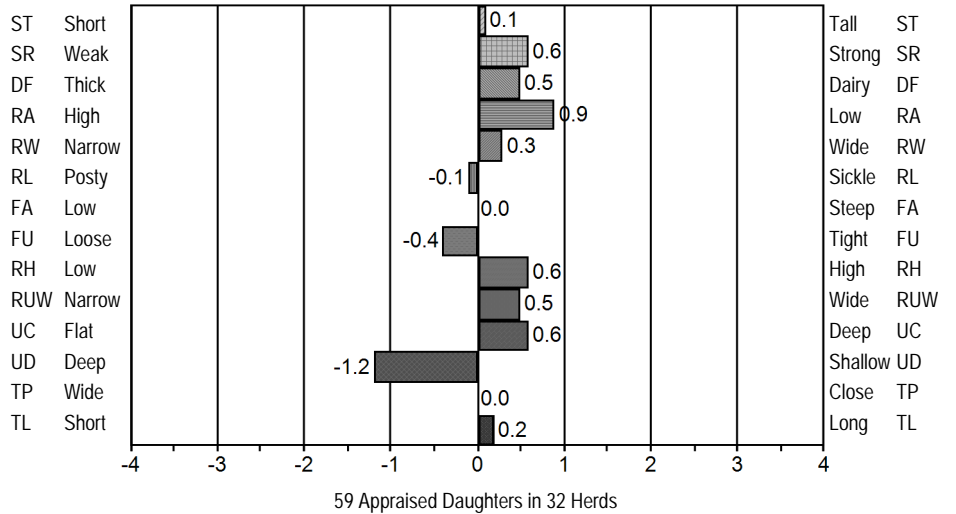
JEUSA000115960668 \*

DOB: 3/13/2008

JPI 178

Marketing Organization: ABS GLOBAL

AJCAUSDA: 12/1/2013



### O.F. TBONE JUDGE

Sire: RICHIES JACE TBONE A364  
 Dam: GR O.F. GARDEN JEWEL  
 MGS: PR OOMSDALE JACE GRATIT GARDEN-ET

PTA Milk	1316
PTA % Fat	-0.04
PTA Fat	54
PTA % Protein	-0.01
PTA Protein	46
Percentile NM\$	69
Cheese Merit	382
Net Merit \$	354
Fluid Merit \$	344
Productive Life	1.1
Somatic Cell Score	3.10
Daughter Pregnancy Rate	-0.4
Expected Future Inbreeding	8.0

Breeder: OWENS FARMS INC  
 Owner: ACCELERATED GENETICS

14JE552

JUDGE

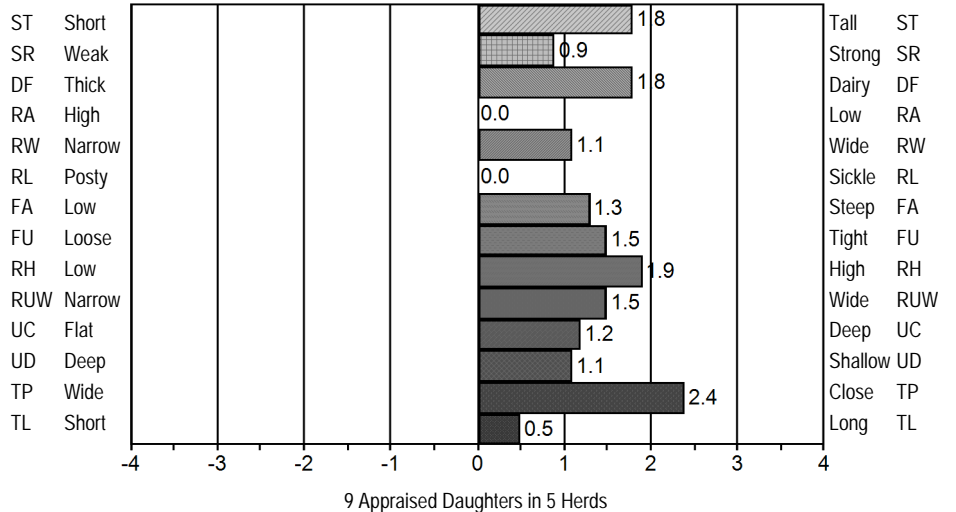
JEUSA000067027187 \*

DOB: 9/10/2009

JPI 178

Marketing Organization: ACCELERATED GENETICS

AJCAUSDA: 12/1/2013





**GR SR GANNON TERRY**

Sire: PR OOMSDALE JACE GRATUDE GANNON-ET  
 Dam: SR IMPULS MERRY  
 MGS: ISDK Q IMPULS

29JE3691

GR-TERRY

JEUSA000116687106 \*

DOB: 2/25/2009

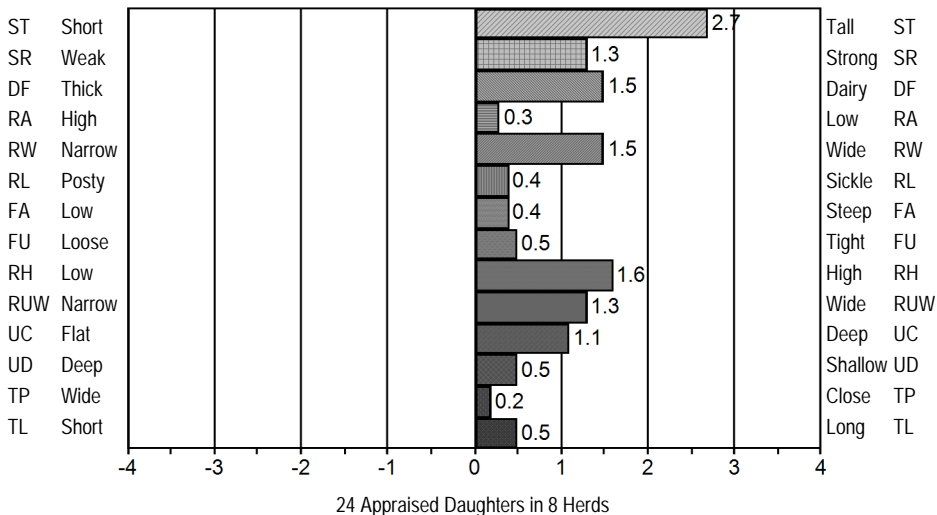
**JPI 177**

Marketing Organization: ABS GLOBAL

AJCAIUSDA: 12/1/2013

PTA Milk	1336
PTA % Fat	-0.09
PTA Fat	44
PTA % Protein	-0.02
PTA Protein	44
Percentile NM\$	80
Cheese Merit	435
Net Merit \$	405
Fluid Merit \$	380
Productive Life	3.2
Somatic Cell Score	2.83
Daughter Pregnancy Rate	-0.1
Expected Future Inbreeding	5.0

Breeder: SPRUCE ROW FARM  
 Owner: ABS GLOBAL INC



**ALL LYNNS JEVON VINSON-ET**

Sire: FOREST GLEN MECCAS JEVON-ET  
 Dam: D&E PARAMOUNT VIOLET  
 MGS: ROCK ELLA PARAMOUNT-ET

11JE998

VINSON

JEUSA000116279495 \*

DOB: 8/7/2008

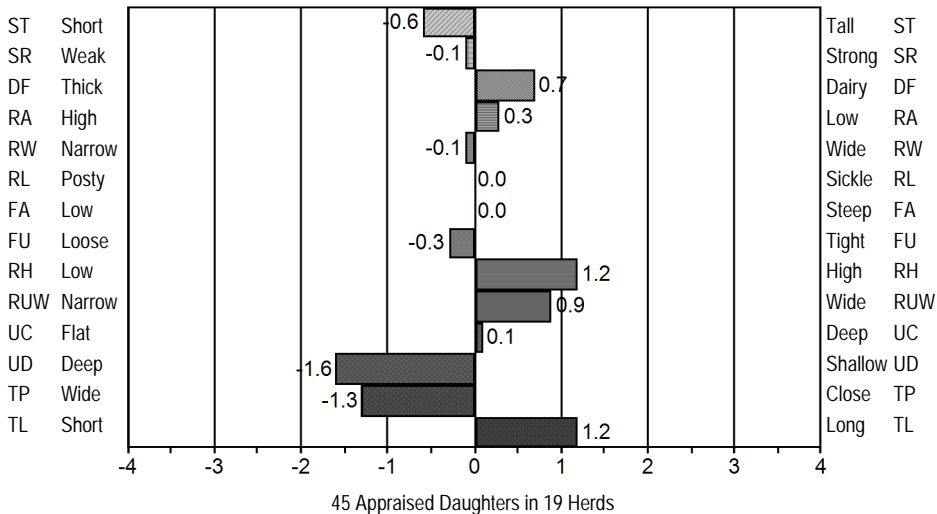
**JPI 172**

Marketing Organization: ALTA GENETICS

YSP AJCAIUSDA: 12/1/2013

PTA Milk	1332
PTA % Fat	0.03
PTA Fat	67
PTA % Protein	0.01
PTA Protein	49
Percentile NM\$	88
Cheese Merit	502
Net Merit \$	455
Fluid Merit \$	419
Productive Life	2.6
Somatic Cell Score	2.89
Daughter Pregnancy Rate	-1.1
Expected Future Inbreeding	7.1

Breeder: ALLEN, DAVID  
 Owner: JERSEYLAND SIREs



**ALL LYNNS RESTORE VIBRANT-ET**

Sire: SCHULTZ DUDLEY RESTORE-ET  
 Dam: D&E PARAMOUNT VIOLET  
 MGS: ROCK ELLA PARAMOUNT-ET

29JE3647

VIBRANT

JEUSA000116076850 \*

DOB: 4/21/2008

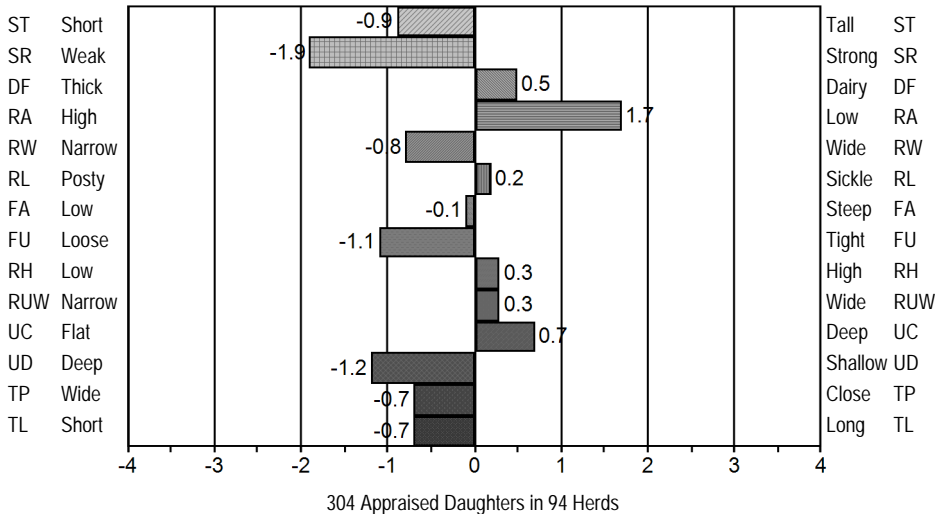
**JPI 172**

Marketing Organization: ABS GLOBAL

AJCAIUSDA: 12/1/2013

PTA Milk	1951
PTA % Fat	-0.24
PTA Fat	41
PTA % Protein	-0.11
PTA Protein	47
Percentile NM\$	81
Cheese Merit	380
Net Merit \$	415
Fluid Merit \$	453
Productive Life	3.2
Somatic Cell Score	2.92
Daughter Pregnancy Rate	-0.5
Expected Future Inbreeding	8.4

Breeder: ALLEN, DAVID  
 Owner: ABS GLOBAL INC



**PR OOMSDALE ROCKET GOOSE-ET**

1JE672

PR-GOOSE-PR

JEUSA000067027311 \*

DOB: 12/25/2005

**JPI 169**

Sire: O.F. BARBER ROCKET

Marketing Organization: GENEX / CRI

YSP

AJCAIUSDA: 12/1/2013

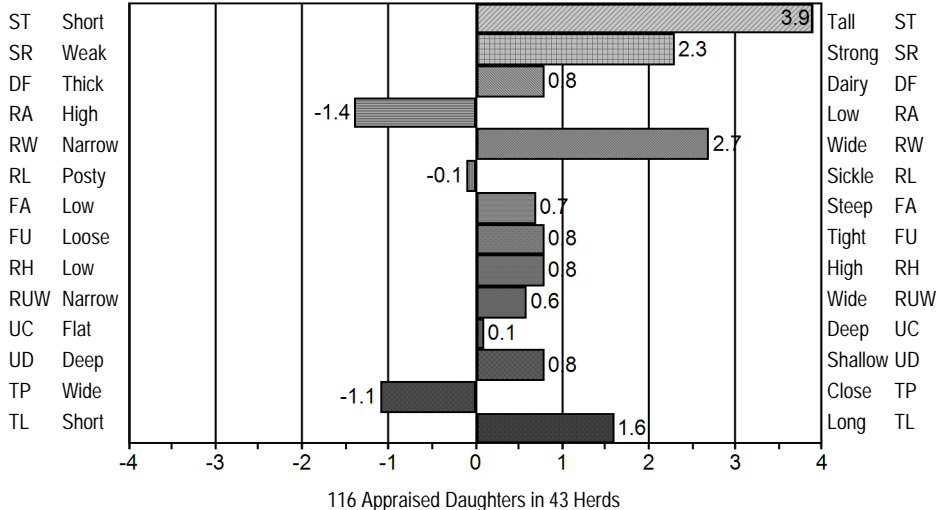
Dam: OA OOMSDALE GORDO GOLDIE GRATITUDE

MGS: UR UNIDENTIFIED UNKNOWN BREED SIRE

PTA Milk	1392
PTA % Fat	-0.05
PTA Fat	54
PTA % Protein	-0.01
PTA Protein	47
Percentile NM\$	75
Cheese Merit	409
Net Merit \$	378
Fluid Merit \$	356
Productive Life	1.9
Somatic Cell Score	2.88
Daughter Pregnancy Rate	0.5
Expected Future Inbreeding	-1.1

Breeder: OOMS, MICHAEL AREND

Owner: NEW ENGLAND JERSEY SIRES INC

**D&E PAUL-ET**

11JE944

PAUL

JEUSA000115181456 \*

DOB: 8/24/2006

**JPI 169**

Sire: O.F. MANNIX REBEL-ET

Marketing Organization: ALTA GENETICS

AJCAIUSDA: 12/1/2013

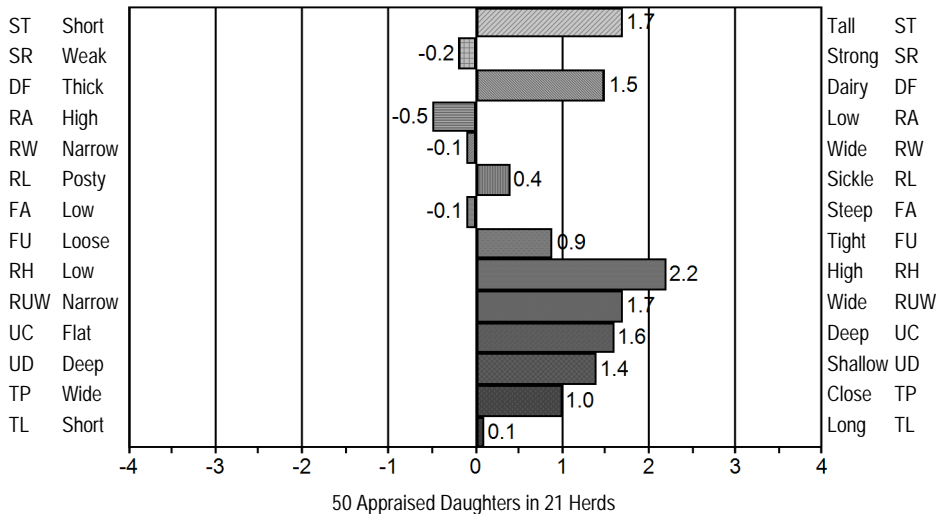
Dam: JO-GEP HALLMARK PARTY TIME

MGS: SCHULTZ BROOK HALLMARK

PTA Milk	1323
PTA % Fat	-0.08
PTA Fat	44
PTA % Protein	-0.01
PTA Protein	45
Percentile NM\$	63
Cheese Merit	364
Net Merit \$	336
Fluid Merit \$	323
Productive Life	1.6
Somatic Cell Score	3.01
Daughter Pregnancy Rate	-1.1
Expected Future Inbreeding	9.6

Breeder: D &amp; E JERSEYS

Owner: JERSEYLAND SIRES

**O.F. IMPULS HANCOCK**

14JE553

HANCOCK

JEUSA000067027185 \*

DOB: 5/30/2009

**JPI 169**

Sire: ISDK Q IMPULS

Marketing Organization: ACCELERATED GENETICS

GDP

AJCAIUSDA: 12/1/2013

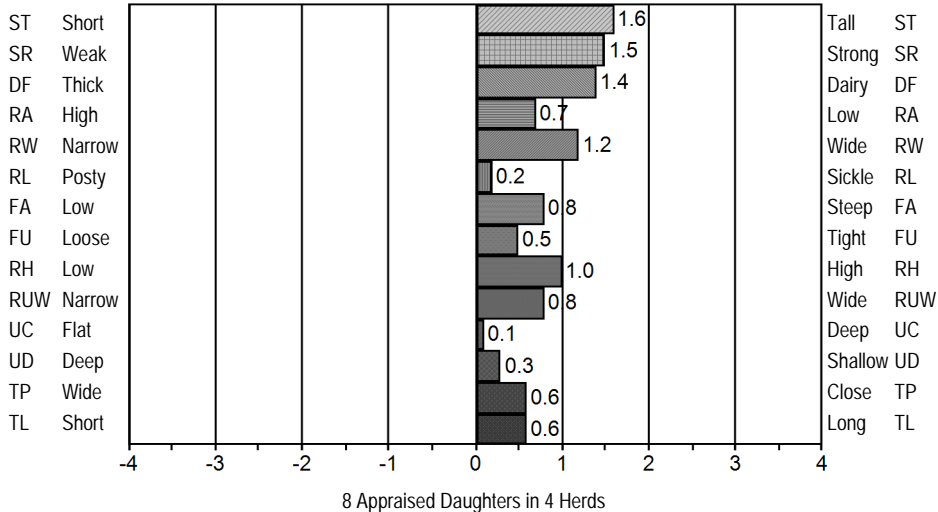
Dam: O.F. MAXIMUS HOLIDAZE

MGS: SUNSET CANYON MAXIMUS-ET

PTA Milk	1087
PTA % Fat	0.11
PTA Fat	72
PTA % Protein	0.02
PTA Protein	41
Percentile NM\$	82
Cheese Merit	465
Net Merit \$	421
Fluid Merit \$	387
Productive Life	1.6
Somatic Cell Score	2.91
Daughter Pregnancy Rate	0.2
Expected Future Inbreeding	3.1

Breeder: OWENS FARMS INC

Owner: ACCELERATED GENETICS





# HAWARDEN IMPULS PREMIER

Sire: ISDK Q IMPULS  
Dam: HAWARDEN JACE PIX  
MGS: WINDY WILLOW MONTANA JACE

29JE3756

PREMIER

JEUSA000067107510 \*

DOB: 5/19/2009

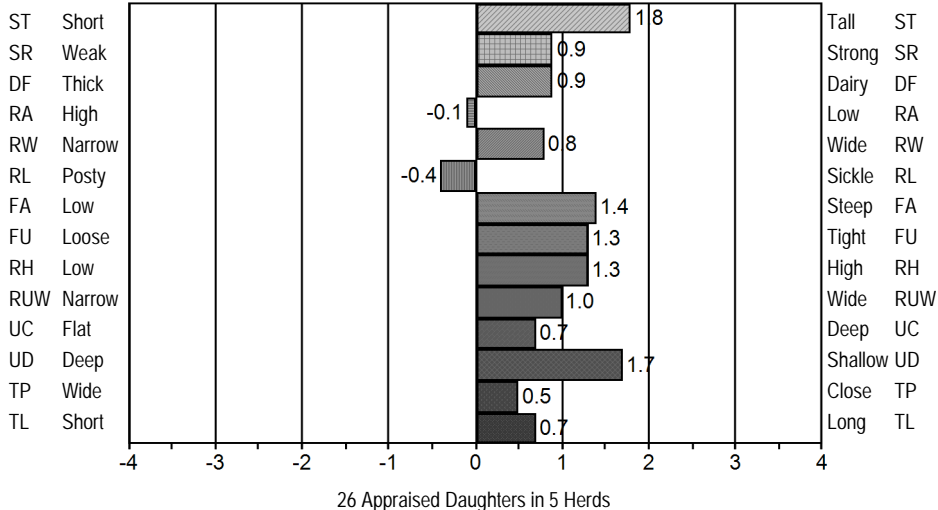
JPI 168

Marketing Organization: ABS GLOBAL

AJCA/USDA: 12/1/2013

PTA Milk	336
PTA % Fat	0.20
PTA Fat	54
PTA % Protein	0.11
PTA Protein	31
Percentile NM\$	87
Cheese Merit	537
Net Merit \$	450
Fluid Merit \$	383
Productive Life	4.1
Somatic Cell Score	3.04
Daughter Pregnancy Rate	0.9
Expected Future Inbreeding	7.0

Breeder: NIELSEN, WYNN R  
Owner: ABS GLOBAL INC



# SF IMPULS 8916

Sire: ISDK JAS ARTIST  
Dam: SF LEMVIG 6900  
MGS: ISDK FYN LEMVIG

1JE648

SF

JEUSA000114635185 \*

DOB: 5/19/2005

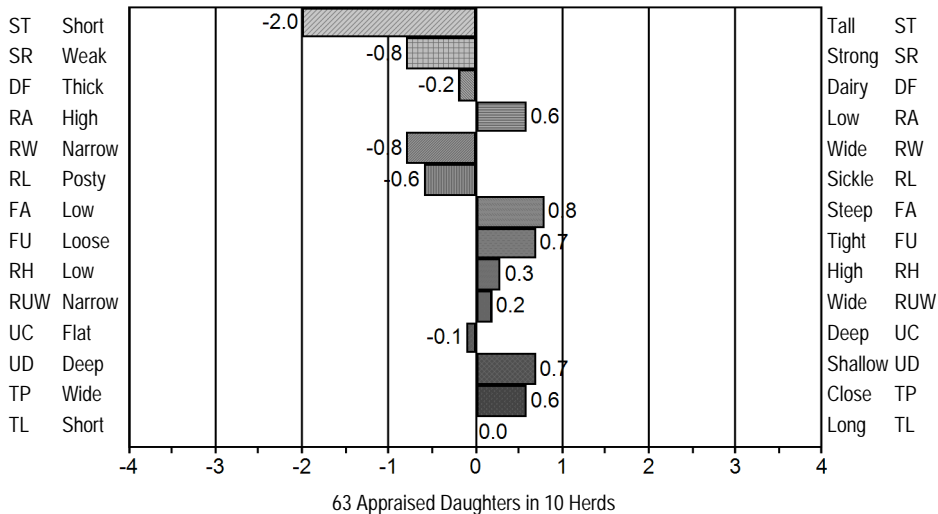
JPI 165

Marketing Organization: GENEX / CRI

GDP AJCA/USDA: 12/1/2013

PTA Milk	730
PTA % Fat	0.10
PTA Fat	52
PTA % Protein	0.03
PTA Protein	30
Percentile NM\$	92
Cheese Merit	544
Net Merit \$	497
Fluid Merit \$	455
Productive Life	4.2
Somatic Cell Score	2.83
Daughter Pregnancy Rate	0.3
Expected Future Inbreeding	5.3

Breeder: STAAS FARM INC  
Owner: GENEX COOPERATIVE INC



# ALL LYNNS IMPULS VANCE-ET

Sire: ISDK Q IMPULS  
Dam: D&E PARAMOUNT VIOLET  
MGS: ROCK ELLA PARAMOUNT-ET

29JE3646

VANCE

JEUSA000116160007 \*

DOB: 6/1/2008

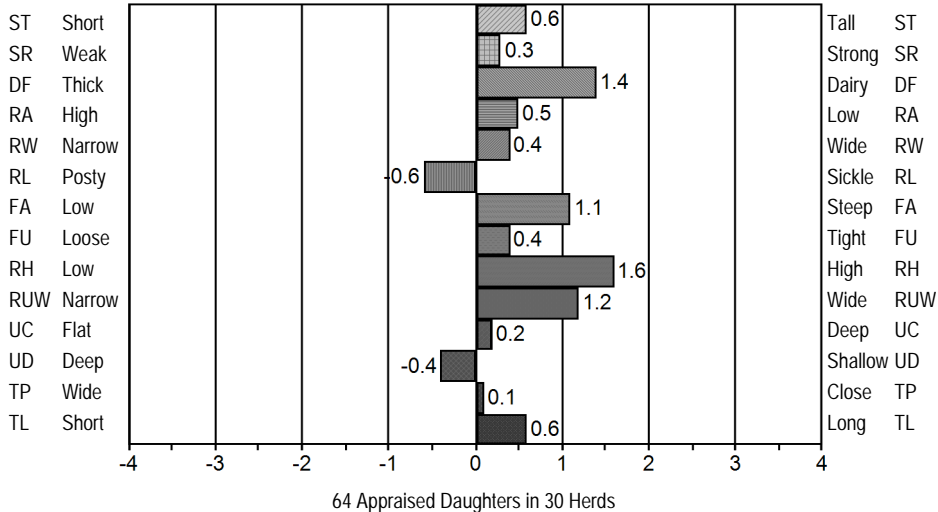
JPI 164

Marketing Organization: ABS GLOBAL

AJCA/USDA: 12/1/2013

PTA Milk	1501
PTA % Fat	-0.05
PTA Fat	61
PTA % Protein	-0.02
PTA Protein	50
Percentile NM\$	69
Cheese Merit	371
Net Merit \$	355
Fluid Merit \$	361
Productive Life	1.2
Somatic Cell Score	3.19
Daughter Pregnancy Rate	-1.1
Expected Future Inbreeding	6.2

Breeder: ALLEN, DAVID  
Owner: ABS GLOBAL INC



**ISDK DJ HULK**

Sire: ISDK Q HANDIX  
 Dam: DNK 021602-01236  
 MGS: ISDK FYN LEMVIG

PTA Milk	336
PTA % Fat	0.41
PTA Fat	92
PTA % Protein	0.14
PTA Protein	38
Percentile NM\$	91
Cheese Merit	595
Net Merit \$	470
Fluid Merit \$	362
Productive Life	2.0
Somatic Cell Score	2.86
Daughter Pregnancy Rate	0.1
Expected Future Inbreeding	1.9

Breeder: UNKNOWN  
 Owner: UNKNOWN

236JE136

HULK

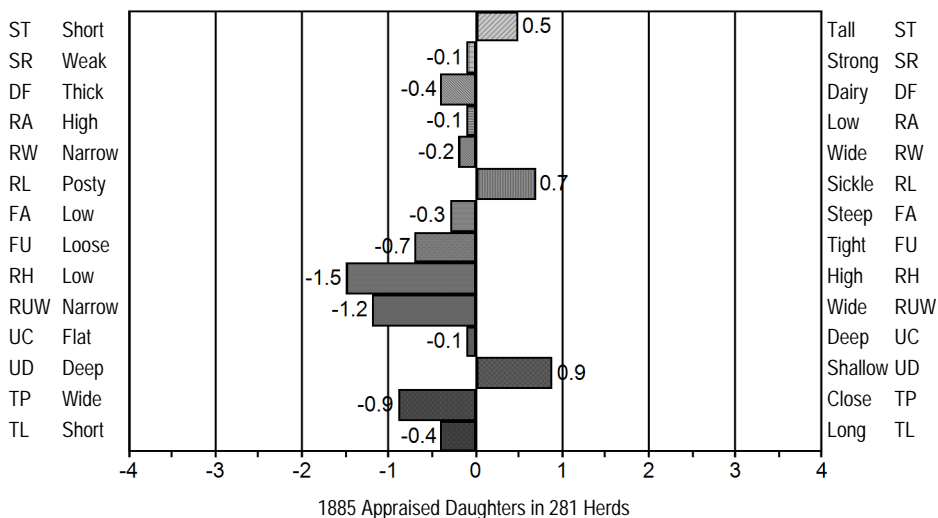
JEDNK00000302595 \*

DOB: 8/4/2003

**JPI 164**

Marketing Organization: SELECT SIRES

AJCA/USDA: 12/1/2013

**GR HOCKETT RESCUE DALE DAZZLE-ET**

Sire: PR OOMSDALE JACE GRATIT GARDEN-ET  
 Dam: EAGLES RESCUE TIFF-ET  
 MGS: SCHULTZ DECLO RESCUE

PTA Milk	1825
PTA % Fat	-0.25
PTA Fat	33
PTA % Protein	-0.07
PTA Protein	50
Percentile NM\$	53
Cheese Merit	294
Net Merit \$	312
Fluid Merit \$	343
Productive Life	1.7
Somatic Cell Score	3.09
Daughter Pregnancy Rate	-0.1
Expected Future Inbreeding	5.2

Breeder: HOCKETT, KEITH S  
 Owner: ACCELERATED GENETICS

14JE544

GR-DAZZLE

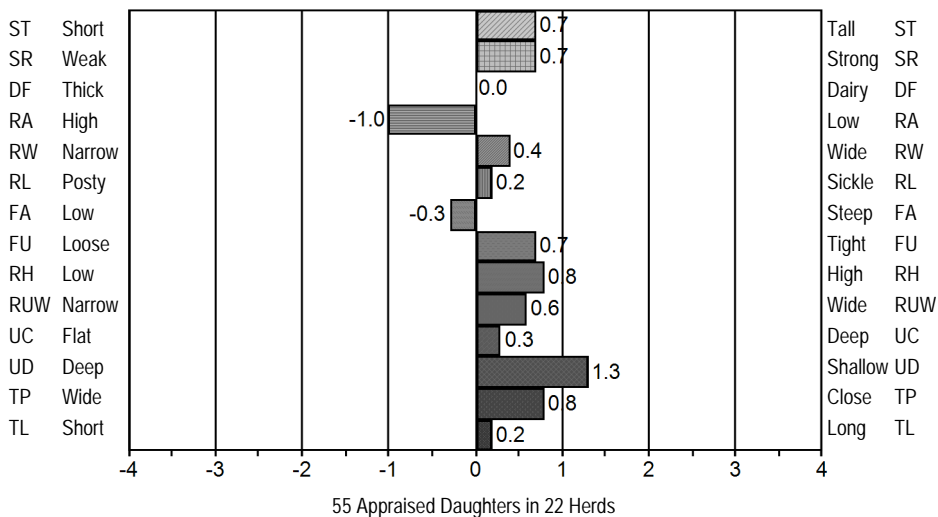
JEUSA000116517078 \*

DOB: 12/6/2008

**JPI 163**

Marketing Organization: ACCELERATED GENETICS

YSP AJCA/USDA: 12/1/2013

**ISDK Q IMPULS**

Sire: ISDK SKAE IDE  
 Dam: DNK 25490 01966  
 MGS: ISDK JAS BYG NO 47880

PTA Milk	359
PTA % Fat	0.21
PTA Fat	57
PTA % Protein	0.13
PTA Protein	37
Percentile NM\$	84
Cheese Merit	537
Net Merit \$	436
Fluid Merit \$	360
Productive Life	3.9
Somatic Cell Score	3.13
Daughter Pregnancy Rate	1.0
Expected Future Inbreeding	3.0

Breeder: UNKNOWN  
 Owner: UNKNOWN

236JE3

IMPULS

JEDNK00000301592 \*

DOB: 9/12/1998

**JPI 162**

Marketing Organization: SELECT SIRES

AJCA/USDA: 12/1/2013

